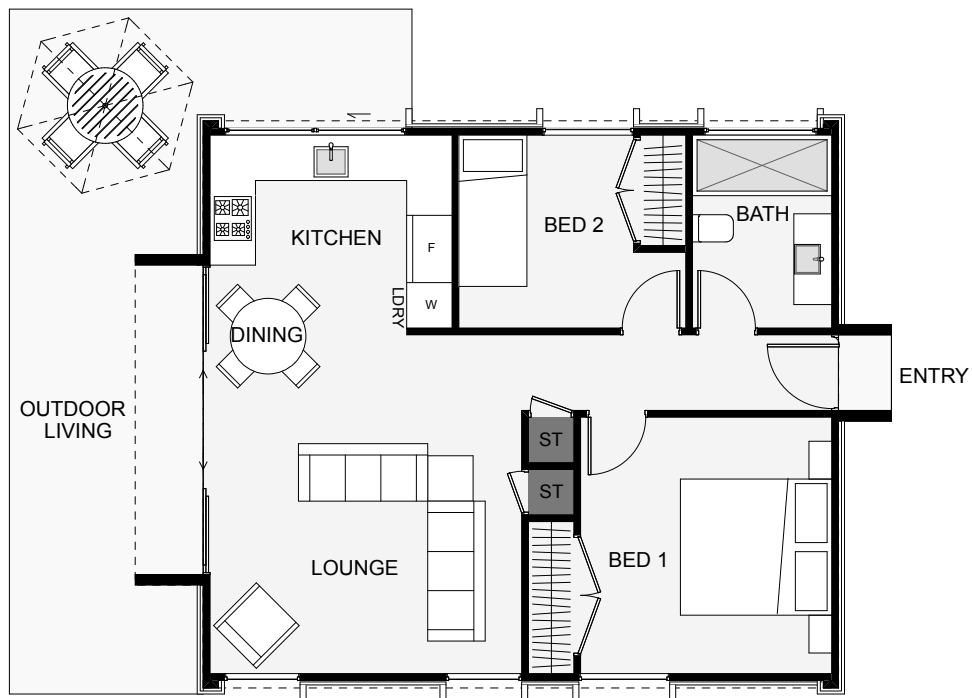




Modern and unobtrusive, this comfortable home is big on architectural style. Clad in powder coated metal sheeting and horizontal shiplap stained timber, the Rico by Catalyst Construction features two bedrooms, storage and a great north facing living space, making it an ideal choice suitable for many properties.



Floor Area: 61m²

0
 2
 1
 1
 10.0m
 7.3m